

Expert

Restaurant Supply



COME VISIT OUR SHOWROOM
LARGE Stock of Both
NEW AND USED
Restaurant Equipment and Supplies

MONDAY - FRIDAY
8 AM - 5 PM

"HABLAMOS ESPAÑOL"

📍 3770 E. 43rd Place Tucson, AZ

📞 520-468-2488

PRICING EXPIRES JULY 31st, 2024

***PRICING SUBJECT TO CHANGE**



FREE DELIVERY

SMALLWARES

EVERY TUESDAY & FRIDAY

*\$100 MINIMUM, SOME RESTRICTIONS MAY APPLY.



VICTORINOX



Bread Knife,
10-1/4" Blade



Boning Knife,
6" blade, curved



Cimeter Knife, 10"
blade, curved



Chef's Knife
8" or 10"



Call For Special Pricing



**Oil & Vinegar Cruet
Rack**
\$3⁵⁰ ea 6 oz



Glass
\$1⁵⁰ ea



Strainer
3" \$1⁵⁰ ea



**Dough
Scraper**
6" x 3" \$3⁵⁰ ea



**Syrup
Dispenser**
6oz \$7⁵⁰ ea



**Syrup
Dispenser**
32 oz \$5⁵⁰ ea



**Shaker or
Dredge**
10 oz \$4⁰⁰ ea



**Squeeze
Bottle**
16 oz(6pk) \$7⁵⁰ ea



**Pourer or
Shaker**
12 oz \$2⁰⁰ ea



Woven Basket
Oval
\$1⁵⁰ ea



**Fast Food
Basket**
\$6⁵⁰ dz



Creamer Pitchers
\$12⁰⁰ ea



Display Case
21" x 18" \$149⁰⁰ ea

NOW STOCKING

CAMBRO

Expert

Restaurant Supply



CamSquare

Food Containers - Clear

2 qt	\$5 ⁵⁰ ea	8 qt	\$12 ⁵⁰ ea
4 qt	\$8 ²⁵ ea	12 qt	\$16 ⁵⁰ ea
6 qt	\$10 ²⁵ ea	18 qt	\$24 ⁵⁰ ea
		22 qt	\$31 ⁰⁰ ea

CamSquare Colored Lids

Green- 2, 4 qt	\$2 ⁵⁰ ea
Red- 6, 8 qt	\$3 ⁰⁰ ea
Blue- 12, 18, 22 qt	\$4 ²⁵ ea



Camwear Lids with Handles

1/2 size	\$6 ⁵⁰ ea
1/3 size	\$5 ⁷⁵ ea
1/6 size	\$3 ⁵⁰ ea



Camwear Flip Lids

1/2 size	\$8 ⁷⁵ ea
1/3 size	\$7 ⁵⁰ ea



Camwear Food Pans - Clear

1/6 size 2-1/2"	\$4 ⁰⁰ ea	1/3 size 2-1/2"	\$5 ⁵⁰ ea	1/2 size 2-1/2"	\$7 ⁰⁰ ea	Full size 2-1/2"	\$12 ⁵⁰ ea
1/6 size 4"	\$4 ⁵⁰ ea	1/3 size 4"	\$7 ⁵⁰ ea	1/2 size 4"	\$8 ⁷⁵ ea	Full size 4"	\$16 ⁰⁰ ea
1/6 size 6"	\$5 ⁸⁵ ea	1/3 size 6"	\$7 ⁵⁰ ea	1/2 size 6"	\$11 ²⁵ ea	Full size 6"	\$19 ⁵⁰ ea

Expert

Restaurant Supply



Beverage Dispenser
3 Gallon
\$39⁰⁰ ea



Deluxe Bell Pitcher with Ice Catcher

2qt **\$21⁰⁰ ea**

3qt **\$24⁰⁰ ea**



3 Lip Pitcher

60oz

Amber or Clear

\$7⁵⁰ ea



Dominion Flatware

Teaspoon **\$2⁰⁰ dz**

Fork **\$2⁵⁰ dz**

Knife **\$5⁵⁰ dz**



Elegance Flatware

Teaspoon **\$3⁰⁰ dz**

Fork **\$3⁷⁵ dz**

Knife **\$9⁷⁵ dz**



Dots Flatware

Teaspoon **\$6⁵⁰ dz**

Fork **\$9⁰⁰ dz**

Knife **\$13⁰⁰ dz**



American White Stoneware
Narrow Rim

7-1/4" plate **\$17⁵⁰ dz** Fruit dish **\$11⁵⁰ dz**

9-3/4" plate **\$42⁰⁰ dz** Bouillon **\$15⁰⁰ dz**

10-1/2" plate **\$44⁰⁰ dz** 10 oz Nappie **\$19⁰⁰ dz**

9-1/2" platter **\$26⁵⁰ dz** 15 oz Nappie **\$25⁰⁰ dz**

11-1/2" platter **\$60⁰⁰ dz** Grapefruit **\$21⁰⁰ dz**

13-1/2" platter **\$83⁰⁰ dz**



Super White Porcelain
Narrow Rim

7-1/4" plate **\$21⁰⁰ dz** Fruit dish **\$13⁵⁰ dz**

9-1/2" plate **\$41⁵⁰ dz** Bouillon **\$19⁰⁰ dz**

10-1/2" plate **\$59⁰⁰ dz** 10 oz Nappie **\$25⁵⁰ dz**

10" platter **\$63⁰⁰ dz** 15 oz Nappie **\$26⁰⁰ dz**

11-1/2" platter **\$80⁰⁰ dz** Grapefruit **\$24⁰⁰ dz**

13" platter **\$117⁰⁰ dz**

Expert

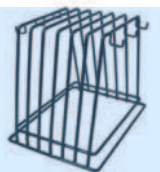
Restaurant Supply



Cutting Boards

15" x 20"

Any Color **\$14⁵⁰** ea



Cutting Board Rack

6 slots **\$14⁰⁰** ea



Pasta Cooker

20 qt **\$130⁰⁰** ea



Sheet Pans

Special Purchase
Limited Quantities

Half size **\$5⁸⁵** ea

Full size **\$7⁵⁰** ea



Colanders

11 qt **\$31⁰⁰** ea

16 qt **\$39⁵⁰** ea



Can Opener

7" L **\$14⁵⁰** ea



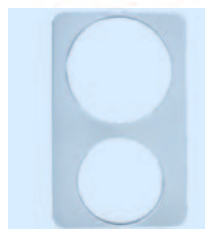
Round Insets

2-1/2 qt **\$11⁵⁰** ea

4 qt **\$11⁰⁰** ea

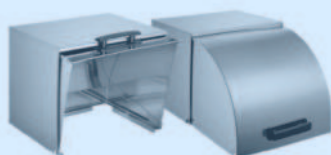
7qt **\$14⁵⁰** ea

11 qt **\$20⁰⁰** ea



Adapter Plates Any Conformity

\$17⁵⁰ ea



Roll-Top Steam Pan Cover

Fits full size pan **\$99⁰⁰** ea



Fry Pans- Excalibur

7" **\$13⁵⁰** ea

8" **\$15⁵⁰** ea

10" **\$21⁵⁰** ea

12" **\$30⁰⁰** ea

14" **\$39⁰⁰** ea



Fry Pans- Natural Finish

7" **\$11⁰⁰** ea

8" **\$12⁵⁰** ea

10" **\$17⁰⁰** ea

12" **\$22⁰⁰** ea

14" **\$29⁰⁰** ea



Steam Table Pans

1/6 size 2" **\$4⁸⁵** ea

1/6 size 4" **\$7⁰⁰** ea

1/6 size 6" **\$10⁰⁰** ea

1/3 size 2" **\$8⁰⁰** ea

1/3 size 4" **\$9⁸⁵** ea

1/3 size 6" **\$15⁰⁰** ea

1/2 size 2" **\$9⁵⁰** ea

1/2 size 4" **\$11⁸⁵** ea

1/2 size 6" **\$17⁵⁰** ea

Full size 2" **\$15⁰⁰** ea

Full size 4" **\$20⁵⁰** ea

Full size 6" **\$27⁰⁰** ea

Expert

Restaurant Supply

DEXTER

THE EDGE SINCE 1818



Bread Knife,
10" Blade,
curved
\$28⁰⁰ ea



Boning Knife,
6" blade,
curved or straight
\$20⁰⁰ ea



Utility Knife, 6"
blade
\$16⁰⁰ ea



Chef's Knife
8" **\$31⁰⁰ ea**
10" **\$34⁰⁰ ea**



Rice Cooker
60 cup capacity **\$165⁰⁰ ea**



Soup Kettle
10- 1/2 qt **\$150⁰⁰ ea**



Heat Lamps
\$125⁰⁰ ea



Microwave Oven,
Dial Control
1000 Watts
\$450⁰⁰ ea



Microwave Oven,
Touch Control
1000 Watts
\$550⁰⁰ ea



Adcraft Electric
Food Warmer
12" x 20" **\$125⁰⁰ ea**



Meat Slicers
1/3 HP
12" blade **\$899⁰⁰ ea**



Fruit /
Vegetable Dicer
1/4" blade **\$149⁰⁰ ea**
3/8" blade **\$149⁰⁰ ea**



Crathco Pre-Mix
Beverage Dispensers
(2) 5 gallon **\$1284⁰⁰ ea**
(3) 5 gallon **\$1646⁰⁰ ea**

WARING COMMERCIAL

Expert
Restaurant Supply



**Xtreme High-Power
Blender**
MX1000XTXP

48 oz capacity **\$455⁰⁰ ea**



**Heavy Duty Food
Blender, 3 Speeds**
CB15P

1 gal capacity **\$1315⁰⁰ ea**



**Big Stix
Immersion Blender**
WSB40/50/55

10" shaft **\$275⁰⁰ ea**

12" shaft **\$489⁰⁰ ea**

14" shaft **\$599⁰⁰ ea**



**Combination Continuous Feed
& Batch Bowl Processor**

3.5 qt capacity **\$825⁰⁰ ea**

4 qt capacity **\$1259⁰⁰ ea**



**Waring 380
Slice/hour
4 Slot Toaster**
\$249⁰⁰ ea



**Waring 1000
Slice/Hour
Conveyor Toaster**
\$779⁰⁰ ea

robot coupe



**Mini Power Mixer,
7" Shaft Length**
MMP160VV

5 liter capacity **\$335⁰⁰ ea**



Cutter & Mixer - Gray
R2B

3 liter capacity **\$1161⁰⁰ ea**
(1) "S" blade



**Commercial Food
Processor - Clear**
R2NCLR

3 liter capacity **\$1337⁰⁰ ea**

(1) "S" blade
(1) 2mm grating disc
(1) 4mm slicing disc

Expert

Restaurant Supply



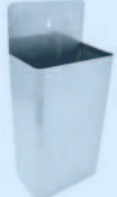
3-Tier Glass Rimmer
\$12⁵⁰ ea



Free-Flow Pourers
\$3⁵⁰ dz
Various Colors



Pour Master Unit
1 qt \$7⁰⁰ dz
Various Colors



Bottle Cap Catcher
\$17⁰⁰ ea



Bar Shaker
30 oz \$4⁵⁰ ea



Glass Washer Brush
(3) brush \$18⁵⁰ ea



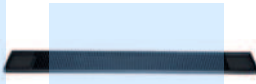
Ice Bucket
60 oz \$34⁰⁰ ea



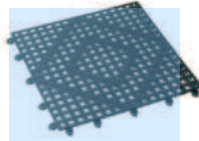
Wine Bucket
8 qt \$18⁵⁰ ea



Red Head Glass Washer
Limited Quantities
\$550⁰⁰ ea



Bar Mat
3-1/4" x 27" - black
\$6⁵⁰ ea



Interlocking Bar Mat
12" x 12" \$5⁵⁰ ea



Bar Caddy
6 Compartments
\$6⁵⁰ ea



24" Ice Bin
7-Circuit Cold Plate
120 lb \$1299⁰⁰ ea



Three Compartment Bar Sink
18" Depth
72" \$999⁰⁰ ea



Underbar Glass Rack Unit
\$725⁰⁰ ea



Bottle Cooler
50" \$1888⁰⁰ ea
65" \$2122⁰⁰ ea
80" \$2857⁰⁰ ea



Expert
Restaurant Supply



Silver Series Faucet
Splash Mounted, 8" centers
Various Spout Sizes
\$79⁰⁰ ea



Silver Series Faucet, Deck-Mounted
4" centers, 3-1/2" gooseneck spout
\$79⁰⁰ ea



Silver Series Faucet, Wall-Mounted
4" centers, 3-1/2" gooseneck spout
\$79⁰⁰ ea



Royal Series Faucet
Splash Mounted, 8" centers
Heavy Duty Ceramic Cartridges
\$155⁰⁰ ea



Royal Series Service Faucet
8" centers, 6-1/2" heavy cast spout
\$175⁰⁰ ea



Royal Pre-Rinse Assembly
8" centers, 35" H
\$330⁰⁰ ea



Wall Mounted Shelves
18 gauge stainless steel
14" x 24" **\$87⁰⁰ ea**
14" x 36" **\$115⁰⁰ ea**
14" x 48" **\$139⁰⁰ ea**



Wire Shelving Unit
4 Shelves & 4 Posts
48" W x 18" D x 72" H
\$199⁰⁰ ea



Hand Sink with Faucet
Wall Mounted
\$149⁰⁰ ea



Antimicrobial Hand Sink with Faucet
Wall Mounted
Limited Quantities
\$119⁰⁰ ea



Wood Top Work Table
Adjustable Undershelf
Hard Rock Maple
72" W **\$899⁰⁰ ea**



90" Three Compartment Sink, with 18" Drain Boards
18" x 18" x 12" **\$750⁰⁰ ea**

Expert

Restaurant Supply



Scouring Sponge
\$1⁰⁰ ea



Slender Trash Can
\$26⁰⁰ ea



Wet Floor Sign
Bilingual
\$11⁵⁰ ea

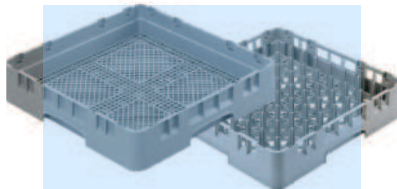


Bath Tissue Dispenser
\$39⁰⁰ ea

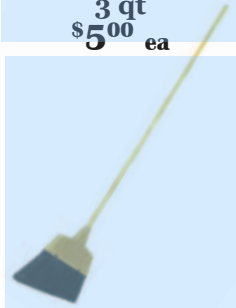
Spray Bottle,
28 oz
\$3⁰⁰ ea



Cleaning Bucket,
3 qt
\$5⁰⁰ ea



Dishwasher Racks
Flatware Rack \$28⁰⁰ ea
Peg Rack \$28⁰⁰ ea



Lobby Broom,
PVC Bristles 53.5"
\$9⁵⁰ ea



Mop Bucket with
Wringer
\$74⁰⁰ ea



LED Open Sign
\$165⁰⁰ ea



High Chair
20" H Seat
\$74⁰⁰ ea



Booster Seat
Stackable
\$74⁰⁰ ea



Bus Cart
\$110⁰⁰ ea



Trash Receptacle
Enclosure
\$275⁰⁰ ea



Expert

Restaurant Supply



Hotplate

- 12" 2 burner **\$520⁰⁰** ea
- 24" 4 burner **\$769⁰⁰** ea
- 36" 6 burner **\$1042⁰⁰** ea



Charbroiler

- 24" **\$998⁰⁰** ea
- 36" **\$1338⁰⁰** ea
- 48" **\$1678⁰⁰** ea



Griddle

Manual Control

- 36" **\$907⁰⁰** ea
- 48" **\$1201⁰⁰** ea
- 60" **\$1586⁰⁰** ea



Hotplate

- 12" 2 burner **\$653⁰⁰** ea
- 24" 4 burner **\$984⁰⁰** ea
- 36" 6 burner **\$1313⁰⁰** ea



Charbroiler

- 24" **\$2236⁰⁰** ea
- 36" **\$2995⁰⁰** ea
- 48" **\$4115⁰⁰** ea



Griddle

Manual Control

- 36" **\$1652⁰⁰** ea
- 48" **\$2075⁰⁰** ea
- 60" **\$2709⁰⁰** ea



Equipment Stand

- 24" **\$179⁰⁰** ea
- 36" **\$235⁰⁰** ea
- 48" **\$279⁰⁰** ea



Worktable

- 30" x 36" **\$199⁰⁰** ea
- 30" x 48" **\$234⁰⁰** ea
- 30" x 60" **\$275⁰⁰** ea
- 30" x 72" **\$325⁰⁰** ea



Add
Optional
Casters

5 YEAR LABOR **6 YEAR PARTS** **7 YEAR COMPRESSOR**
WARRANTY



Mega Top

Sandwich Prep Tables

- 27" 8 pan **\$2749⁰⁰** ea
- 48" 12 pan **\$4249⁰⁰** ea
- 60" 16 pan **\$4499⁰⁰** ea

Sandwich Prep Tables

- 27" 12 pan **\$3299⁰⁰** ea
- 48" 18 pan **\$4799⁰⁰** ea
- 60" 24 pan **\$5299⁰⁰** ea

Pizza Prep Tables

- TPP-AT-44-HC **\$4499⁰⁰** ea
- TPP-AT-67-HC **\$6199⁰⁰** ea
- TPP-AT-93-HC **\$8549⁰⁰** ea



Reach-In Refrigerators

- 23 CU. FT **\$3399⁰⁰** ea
- 49 CU. FT **\$5299⁰⁰** ea
- 72 CU. FT **\$7199⁰⁰** ea

Reach-In Freezers

- 23 CU. FT **\$4999⁰⁰** ea
- 49 CU. FT **\$6999⁰⁰** ea
- 72 CU. FT **\$9199⁰⁰** ea



Merchandiser Refrigerators

- 5 CU. FT **\$2499⁰⁰** ea
- 23 CU. FT **\$3099⁰⁰** ea
- 49 CU. FT **\$4899⁰⁰** ea
- 72 CU. FT **\$6450⁰⁰** ea



**2 YEAR PARTS & LABOR WARRANTY
5 YEAR COMPRESSOR WARRANTY**

Expert
Restaurant Supply



Sandwich Prep Tables

- 27" 8 pan **\$1729⁰⁰** ea
- 48" 12 pan **\$2464⁰⁰** ea
- 60" 16 pan **\$2837⁰⁰** ea
- 72" 18 pan **\$3316⁰⁰** ea



**Mega Top
Sandwich Prep Tables**

- 27" 12 pan **\$2036⁰⁰** ea
- 48" 18 pan **\$2948⁰⁰** ea
- 60" 24 pan **\$3153⁰⁰** ea
- 72" 30 pan **\$3583⁰⁰** ea



Ice Machine

- 460 IB **\$2999⁰⁰** ea
- 810IB **\$4589⁰⁰** ea



Ice Bin

- 396IB **\$994⁰⁰** ea
- 700IB **\$1453⁰⁰** ea



Reach-In Refrigerators

- 19 CU. FT **\$2332⁰⁰** ea
- 47. CU. FT **\$3249⁰⁰** ea
- 68 CU. FT **\$5087⁰⁰** ea

Reach- In Freezers

- 19 CU. FT **\$2826⁰⁰** ea
- 43 CU. FT **\$4044⁰⁰** ea
- 71 CU. FT **\$6002⁰⁰** ea

*Extended Warranties
Available*



**Ice Makers with
Ice Bins -**

- Includes Water Filter
- 142 lb/ 24 h **\$1989⁰⁰** ea
- 283 lb/ 24 h **\$2562⁰⁰** ea

Heavy Duty Griddle

24" Deep, 1" Thick Plate, Manual Control

- 24" **\$3345⁰⁰** ea 60" **\$7110⁰⁰** ea
 36" **\$4565⁰⁰** ea 72" **\$8755⁰⁰** ea
 48" **\$5755⁰⁰** ea

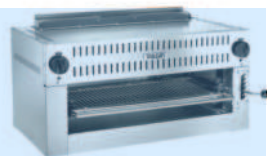


Fryer
 35-40 lb Oil Capacity
\$1585⁰⁰ ea

Eligible for Rebate with SW Gas



**6 Burner Range
 with Oven**
\$2440⁰⁰ ea



Salamander
 36" Wide
\$4100⁰⁰ ea



Stock Pot Range
 Single Burner
\$1360⁰⁰ ea

BLODGETT

**Single Stack or
 Double Stack
 Convection Oven**
 Gas or Electric

Limited Quantities



Call For Special Pricing



centerline

Expert

Restaurant Supply



Mixer
20QT **\$3788⁰⁰** ea

by **HOBART**



Meat Slicer
12" blade **\$1949⁰⁰** ea

HOBART



Mixer
60QT



Dishwasher
Door-Type



Food Processor
Bowl Design



Call For Special Pricing



Kitchens of the Future® LIVE COOKING EVENT



Scan QR Code
To Sign up for
**RATIONAL Live
Cooking Event**



Join us for a live cooking demonstration where guests will learn how cooking technology has the ability to:

RATIONAL iCombi® Pro

• Steam, bake, fry, roast, grill, overnight cook & hold and MUCH MORE.
All in one, self-cleaning intelligent piece of equipment.

RATIONAL iVario® Pro

• Boil, pan fry, deep-fry, pressure-cook.
Four times faster than conventional appliances.

Expert

Restaurant Supply
We have you covered

520.468.2488

fax 520.277.9075
info@ExpertRS.com

3770 E. 43rd Place
Tucson, AZ 85713

PRSRRT STD
U.S. POSTAGE
PAID
TUCSON, AZ
PERMIT NO. 553

AUTHORIZED DEALERS OF



AND MANY MORE

3770 E. 43rd Place Tucson, AZ
520-468-2488

PRICING EXPRIES JULY 31ST, 2024

***PRICING SUBJECT TO CHANGE**